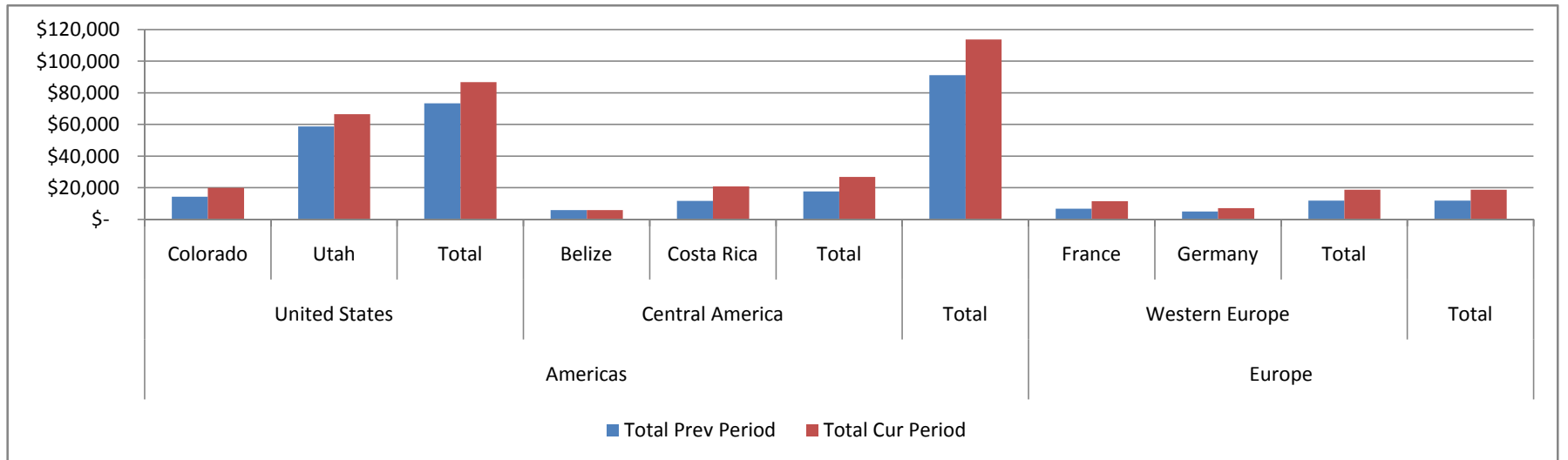


Sales by Booking Date

Current Period 1/1/2008-12/31/2008

Previous Period 1/1/2007-12/31/2007

			Total			Group/Scheduled			Private/FIT		
			Prev Period	Cur Period	% Change	Prev Period	Cur Period	% Change	Prev Period	Cur Period	% Change
Americas	United States	Colorado	\$ 14,503	\$ 20,123	39 %	\$ 14,503	\$ 20,123	39 %			
		Utah	\$ 58,842	\$ 66,592	13 %	\$ 49,549	\$ 54,600	10 %	\$ 9,293	\$ 11,992	29 %
		Total	\$ 73,345	\$ 86,715	18 %	\$ 64,052	\$ 74,723	17 %	\$ 9,293	\$ 11,992	29 %
	Central America	Belize	\$ 6,010	\$ 5,999	0 %	\$ 6,010	\$ 5,999	0 %			
		Costa Rica	\$ 11,839	\$ 20,939	77 %	\$ 11,839	\$ 20,939	77 %			
		Total	\$ 17,849	\$ 26,938	51 %	\$ 17,849	\$ 26,938	51 %			
	Total	\$ 91,194	\$ 113,653	25 %	\$ 81,901	\$ 101,661	24 %	\$ 9,293	\$ 11,992	29 %	
Europe	Western Europe	France	\$ 6,926	\$ 11,530	66 %	\$ 4,923	\$ 5,030	2 %	\$ 2,003	\$ 6,500	225 %
		Germany	\$ 5,091	\$ 7,300	43 %	\$ 5,091	\$ 7,300	43 %			
		Total	\$ 12,017	\$ 18,830	57 %	\$ 10,014	\$ 12,330	23 %	\$ 2,003	\$ 6,500	225 %
	Total	\$ 12,017	\$ 18,830	57 %	\$ 10,014	\$ 12,330	23 %	\$ 2,003	\$ 6,500	225 %	

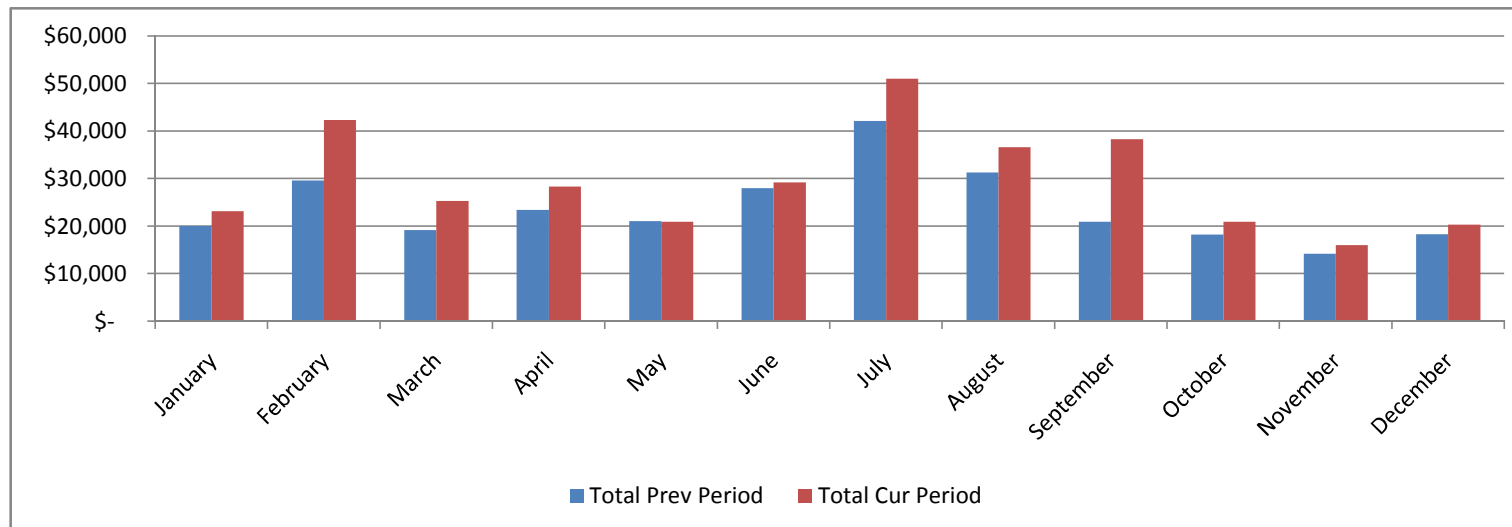


Sales by Booking Date

Current Period 1/1/2008-12/31/2008

Previous Period 1/1/2007-12/31/2007

	Total			Group/Scheduled			Private/FIT		
	Prev Period	Cur Period	% Change	Prev Period	Cur Period	% Change	Prev Period	Cur Period	% Change
January	\$ 20,031	\$ 23,125	15 %	\$ 18,028	\$ 20,123	12 %	\$ 2,003	\$ 3,002	50 %
February	\$ 29,593	\$ 42,285	43 %	\$ 20,300	\$ 30,293	49 %	\$ 9,293	\$ 11,992	29 %
March	\$ 19,203	\$ 25,309	32 %	\$ 19,203	\$ 25,309	32 %			
April	\$ 23,403	\$ 28,308	21 %	\$ 23,403	\$ 28,308	21 %			
May	\$ 21,039	\$ 20,939	0 %	\$ 21,039	\$ 20,939	0 %			
June	\$ 28,013	\$ 29,203	4 %	\$ 28,013	\$ 29,203	4 %			
July	\$ 42,132	\$ 51,012	21 %	\$ 40,093	\$ 48,029	20 %	\$ 2,039	\$ 2,983	46 %
August	\$ 31,264	\$ 36,604	17 %	\$ 28,030	\$ 32,038	14 %	\$ 3,234	\$ 4,566	41 %
September	\$ 20,939	\$ 38,297	83 %	\$ 20,939	\$ 38,297	83 %			
October	\$ 18,203	\$ 20,938	15 %	\$ 18,203	\$ 20,938	15 %			
November	\$ 14,203	\$ 16,020	13 %	\$ 14,203	\$ 16,020	13 %			
December	\$ 18,303	\$ 20,303	11 %	\$ 18,303	\$ 20,303	11 %			

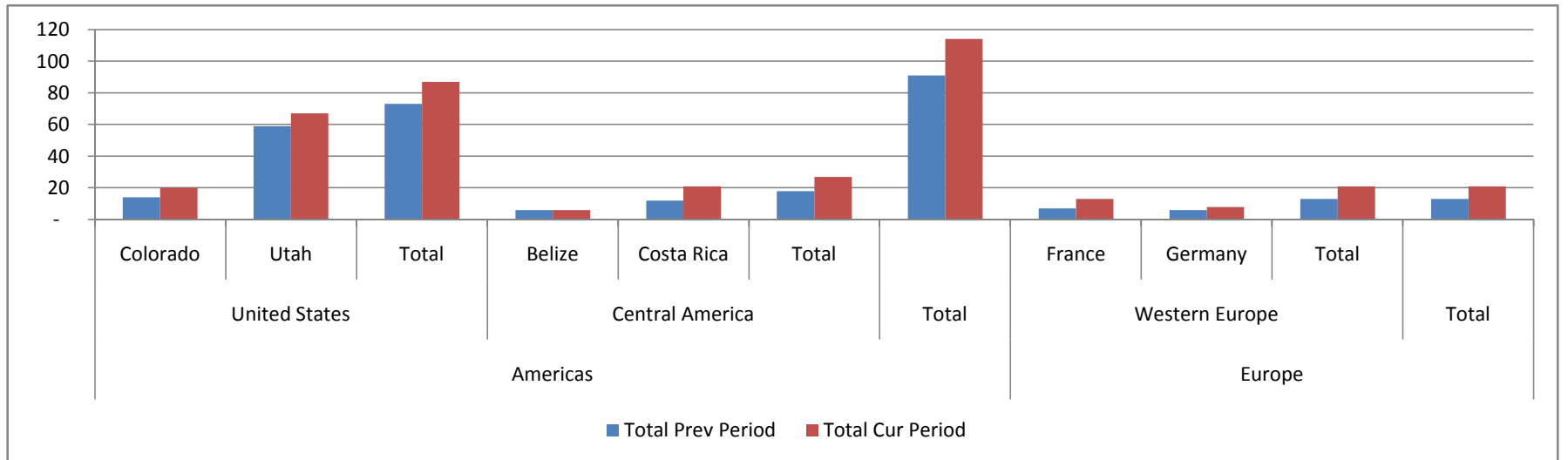


Guests by Booking Date

Current Period 1/1/2008-12/31/2008

Previous Period 1/1/2007-12/31/2007

			Total			Group/Scheduled			Private/FIT		
			Prev Period	Cur Period	% Change	Prev Period	Cur Period	% Change	Prev Period	Cur Period	% Change
Americas	United States	Colorado	14	20	43 %	14	20	43 %			
		Utah	59	67	14 %	50	55	10 %	9	12	33 %
		Total	73	87	19 %	64	75	17 %	9	12	33 %
	Central America	Belize	6	6	0 %	6	6	0 %			
		Costa Rica	12	21	75 %	12	21	75 %			
		Total	18	27	50 %	18	27	50 %			
	Total	91	114	25 %	82	102	24 %	9	12	33 %	
Europe	Western Europe	France	7	13	86 %	5	6	20 %	2	7	250 %
		Germany	6	8	33 %	6	8	33 %			
		Total	13	21	62 %	11	14	27 %	2	7	250 %
	Total	13	21	62 %	11	14	27 %	2	7	250 %	

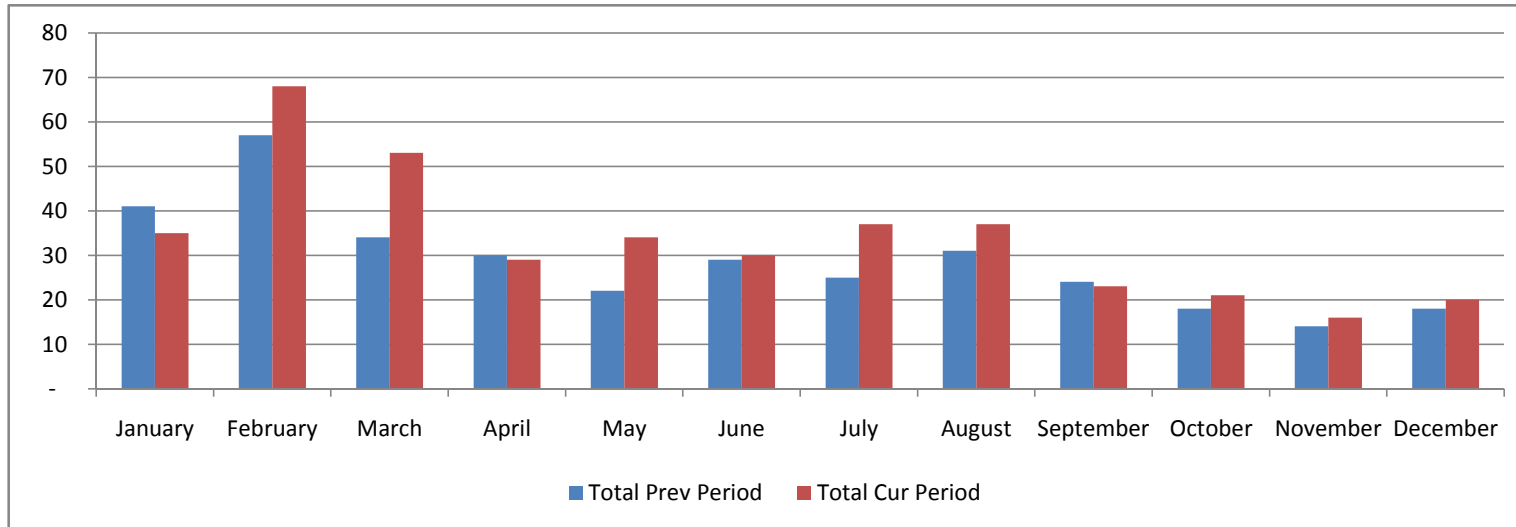


Guests by Booking Date

Current Period 1/1/2008-12/31/2008

Previous Period 1/1/2007-12/31/2007

	Total			Group/Scheduled			Private/FIT		
	Prev Period	Cur Period	% Change	Prev Period	Cur Period	% Change	Prev Period	Cur Period	% Change
January	41	35	-15 %	39	32	-18 %	2	3	50 %
February	57	68	19 %	48	56	17 %	9	12	33 %
March	34	53	56 %	34	53	56 %			
April	30	29	-3 %	30	29	-3 %			
May	22	34	55 %	22	34	55 %			
June	29	30	3 %	29	30	3 %			
July	25	37	48 %	23	34	48 %	2	3	50 %
August	31	37	19 %	28	32	14 %	3	5	67 %
September	24	23	-4 %	21	23	10 %	3		
October	18	21	17 %	18	21	17 %			
November	14	16	14 %	14	16	14 %			
December	18	20	11 %	18	20	11 %			

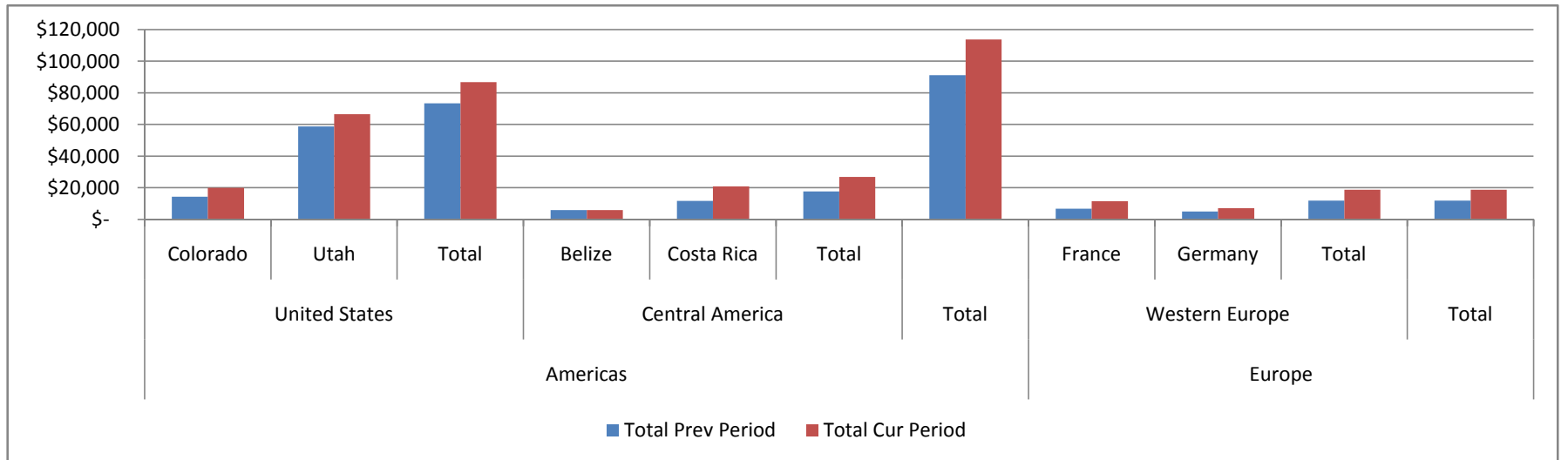


Sales by Departure Date

Current Period 1/1/2008-12/31/2008

Previous Period 1/1/2007-12/31/2007

			Total			Group/Scheduled			Private/FIT		
			Prev Period	Cur Period	% Change	Prev Period	Cur Period	% Change	Prev Period	Cur Period	% Change
Americas	United States	Colorado	\$ 14,503	\$ 20,123	39 %	\$ 14,503	\$ 20,123	39 %			
		Utah	\$ 58,842	\$ 66,592	13 %	\$ 49,549	\$ 54,600	10 %	\$ 9,293	\$ 11,992	29 %
		Total	\$ 73,345	\$ 86,715	18 %	\$ 64,052	\$ 74,723	17 %	\$ 9,293	\$ 11,992	29 %
	Central America	Belize	\$ 6,010	\$ 5,999	0 %	\$ 6,010	\$ 5,999	0 %			
		Costa Rica	\$ 11,839	\$ 20,939	77 %	\$ 11,839	\$ 20,939	77 %			
		Total	\$ 17,849	\$ 26,938	51 %	\$ 17,849	\$ 26,938	51 %			
Total	\$ 91,194	\$ 113,653	25 %	\$ 81,901	\$ 101,661	24 %	\$ 9,293	\$ 11,992	29 %		
Europe	Western Europe	France	\$ 6,926	\$ 11,530	66 %	\$ 4,923	\$ 5,030	2 %	\$ 2,003	\$ 6,500	225 %
		Germany	\$ 5,091	\$ 7,300	43 %	\$ 5,091	\$ 7,300	43 %			
		Total	\$ 12,017	\$ 18,830	57 %	\$ 10,014	\$ 12,330	23 %	\$ 2,003	\$ 6,500	225 %
	Total	\$ 12,017	\$ 18,830	57 %	\$ 10,014	\$ 12,330	23 %	\$ 2,003	\$ 6,500	225 %	

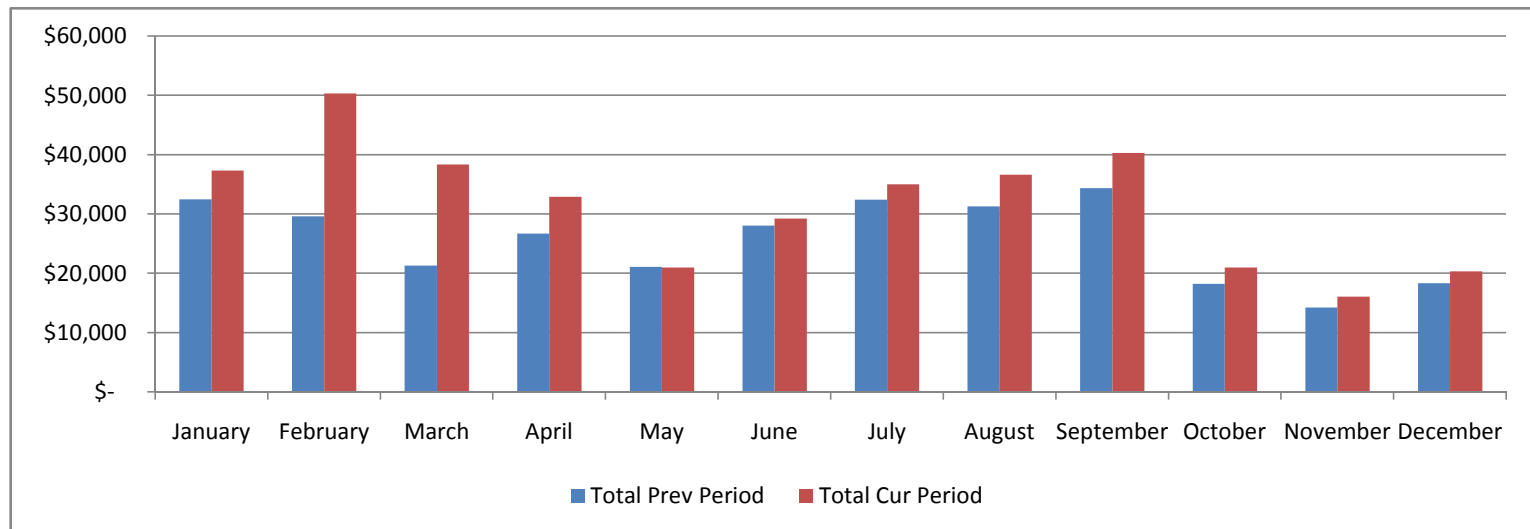


Sales by Departure Date

Current Period 1/1/2008-12/31/2008

Previous Period 1/1/2007-12/31/2007

	Total			Group/Scheduled			Private/FIT		
	Prev Period	Cur Period	% Change	Prev Period	Cur Period	% Change	Prev Period	Cur Period	% Change
January	\$ 32,405	\$ 37,287	15 %	\$ 28,404	\$ 33,234	17 %	\$ 4,001	\$ 4,053	1 %
February	\$ 29,593	\$ 50,296	70 %	\$ 20,300	\$ 38,304	89 %	\$ 9,293	\$ 11,992	29 %
March	\$ 21,242	\$ 38,285	80 %	\$ 19,203	\$ 35,302	84 %	\$ 2,039	\$ 2,983	46 %
April	\$ 26,637	\$ 32,874	23 %	\$ 23,403	\$ 28,308	21 %	\$ 3,234	\$ 4,566	41 %
May	\$ 21,039	\$ 20,939	0 %	\$ 21,039	\$ 20,939	0 %			
June	\$ 28,013	\$ 29,203	4 %	\$ 28,013	\$ 29,203	4 %			
July	\$ 32,387	\$ 34,986	8 %	\$ 30,348	\$ 32,003	5 %			
August	\$ 31,264	\$ 36,604	17 %	\$ 28,030	\$ 32,038	14 %			
September	\$ 34,304	\$ 40,234	17 %	\$ 34,304	\$ 40,234	17 %			
October	\$ 18,203	\$ 20,938	15 %	\$ 18,203	\$ 20,938	15 %			
November	\$ 14,203	\$ 16,020	13 %	\$ 14,203	\$ 16,020	13 %			
December	\$ 18,303	\$ 20,303	11 %	\$ 18,303	\$ 20,303	11 %			

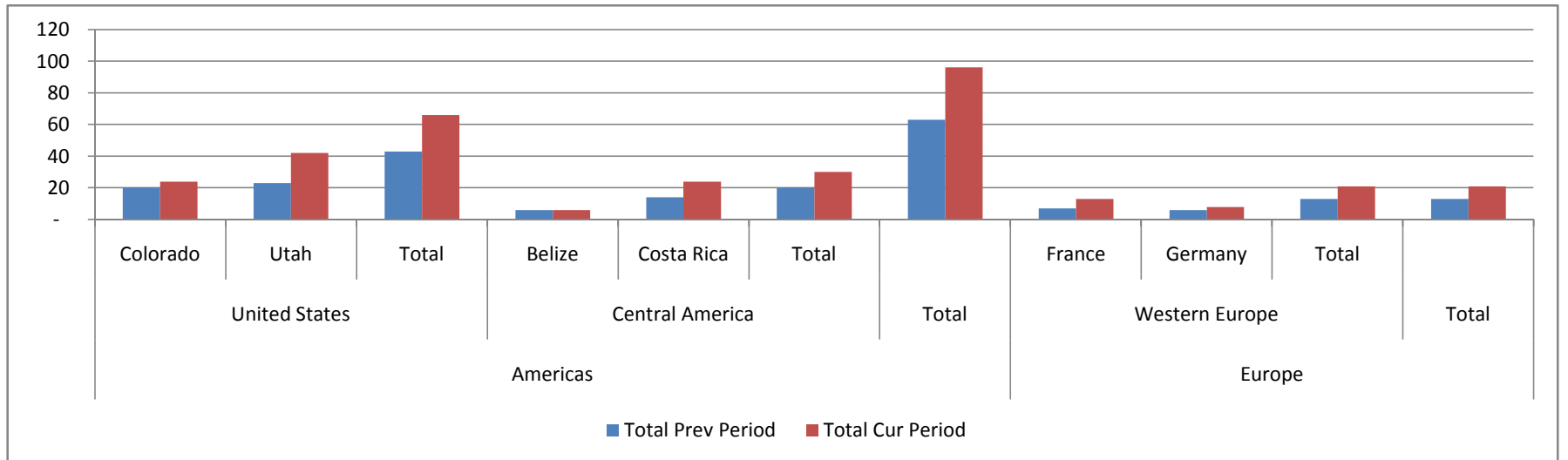


Guests by Departure Date

Current Period 1/1/2008-12/31/2008

Previous Period 1/1/2007-12/31/2007

			Total			Group/Scheduled			Private/FIT		
			Prev Period	Cur Period	% Change	Prev Period	Cur Period	% Change	Prev Period	Cur Period	% Change
Americas	United States	Colorado	20	24	20 %	20	24	20 %			
		Utah	23	42	83 %	21	36	71 %	2	6	200 %
		Total	43	66	53 %	40	38	-5 %	2	6	200 %
	Central America	Belize	6	6	0 %	6	6	0 %			
		Costa Rica	14	24	71 %	14	24	71 %			
		Total	20	30	50 %	20	30	50 %			
	Total	63	96	52 %	61	65	7 %	2	6	200 %	
Europe	Western Europe	France	7	13	86 %	5	6	20 %	2	7	250 %
		Germany	6	8	33 %	6	8	33 %			
		Total	13	21	62 %	11	14	27 %	2	7	250 %
	Total	13	21	62 %	11	14	27 %	2	7	250 %	



Guests by Departure Date

Current Period 1/1/2008-12/31/2008

Previous Period 1/1/2007-12/31/2007

	Total			Group/Scheduled			Private/FIT		
	Prev Period	Cur Period	% Change	Prev Period	Cur Period	% Change	Prev Period	Cur Period	% Change
January	20	23	15 %	18	20	11 %	2	3	50 %
February	29	42	45 %	20	30	50 %	9	12	33 %
March	19	26	37 %	19	26	37 %			
April	23	30	30 %	23	30	30 %			
May	22	21	-5 %	22	21	-5 %			
June	29	30	3 %	29	30	3 %			
July	50	59	18 %	48	56	17 %	2	3	50 %
August	31	37	19 %	28	32	14 %	3	5	67 %
September	21	39	86 %	21	39	86 %			
October	18	21	17 %	18	21	17 %			
November	14	16	14 %	14	16	14 %			
December	18	20	11 %	18	20	11 %			

